

ARB **FITTING INSTRUCTIONS**

ARB FORD RANGER & MAZDA BT- 50 REAR STEP TOW BARS , For MAZDA Vehicles from DEC 2006 ONWARDS . For FORD Vehicles from FEB 2007 ONWARDS .

PRODUCT NUMBER :-

364 0100 – Rear Step Tow Bar

FITTING KIT :-

617 2160 - To suit Rear Step Tow Bar. (364 0100)

Note: Loctite 262 to be supplied by the fitter

WARNING

NOTE THE FOLLOWING :-



- ◆ This product must be installed exactly as per these instructions using only the hardware supplied.
- ◆ In the event of damage to any rear step tow bar or component, contact your nearest authorised ARB stockist. Repairs or modifications to the impact absorption system must not be attempted.
- ◆ Do not use this product for any vehicle make or model, other than those specified by ARB.
- ◆ Do not remove labels from this rear step tow bar or components .
- ◆ This product or its fixing must not be modified in any way.
- ◆ The installation of this product may require the use of specialized tools and/or techniques
- ◆ It is recommended that this product is only installed by trained personnel
- ◆ These instructions are correct as at the publication date. ARB Corporation Ltd. cannot be held responsible for the impact of any changes subsequently made by the vehicle manufacturer
- ◆ During installation, it is the duty of the installer to check correct operation/clearances of all components
- ◆ Work safely at all times
- ◆ Unless otherwise instructed, tighten fasteners to specified torque

GENERAL CARE AND MAINTENANCE

By choosing an ARB Rear Step Tow Bar, you have bought a product that is one of the most sought after 4WD products in the world. Your bar is a properly engineered, reliable, quality accessory that represents excellent value. To keep your bar in original condition it is important to care and maintain it following these recommendations:

- Prior to exposure to the weather your RSTB should be treated to a Canuba based polish on all exposed surfaces. It is recommended that this is performed on a six monthly basis or following exposure to salt, mud, sand or other contaminants.
- As part of any Pre Trip Preparation, or on an annual basis, it is recommended that a thorough visual inspection of the RSTB is carried out, making sure that all bolts and other components are torqued to the correct specification. Also check that all wiring sheaths, connectors, and fittings are free of damage. Replace any components as necessary. This service can be performed by your local authorized ARB Stockist.

HAVE AVAILABLE THESE SAFETY ITEMS WHEN FITTING PRODUCT :-

Protective eyewear		Hearing protection	
--------------------	--	--------------------	--

NOTE: 'WARNING' notes in the fitting procedure relate to OHS situations, where to avoid a potentially hazardous situation it is suggested that protective safety gear be worn or a safe work procedure be employed. If these notes and warnings are not heeded, injury may result.

FASTENER TORQUE SETTINGS :-

SIZE	Torque Nm	Torque lbft
M6	9Nm	4lbft
M8	22Nm	16lbft
M10	44Nm	32lbft
M12	77Nm	57lbft

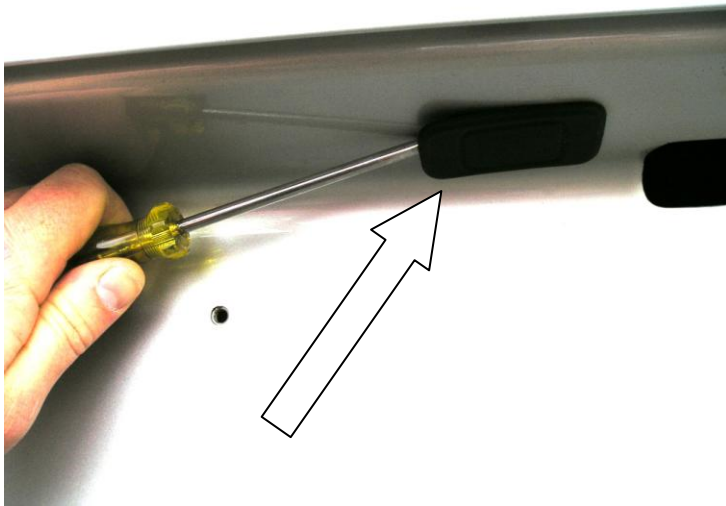
USE	PART No	QTY	DESCRIPTION
REAR STEP TOW BAR TO VEHICLE .	364 0100	1	REAR STEP TOW BAR – FORD RANGER
	319 9896	2	CAPTIVE NUT PLATE (40 mm PITCH)
	319 3654	2	CAPTIVE NUT PLATE (100 mm PITCH)
	615 1302	8	M10 CAGE NUTS
	615 1357	8	M10 BOLT WITH WASHERS
	319 9882	2	CAGE NUT ARM
	615 1306	2	M12 CAGE NUTS
	615 1255	2	BOLT M12 x 1.75 PITCH x 40mm LONG
	458 1050	6	WASHER SPRING ½ “
	458 1049	6	WASHER FLAT ½ “
	615 1098	4	BOLT M12 x 1.5 PITCH x 40mm LONG
RECOVERY EYE BOLT	615 1111	2	RECOVERY EYE BOLT (M20 x 1.5 PITCH)
	615 1161	2	NUT M20 x 1.5 PITCH
TOW HITCH ASSY TO REAR STEP TOW BAR	476 1110	1	TOW HITCH ASSY
	550 10	1	TOW HITCH PULL PIN
	550 20	1	TOW HITCH SPRING CLIP
CHECKER PLATE TO REAR STEP TOW BAR	319 9895	1	CHECKER TOP - ALUMINUM
	615 1200	8	BOLT DOME HEAD M6 x 1.25 PITCH
	6151128	8	WASHER BODY M6
	458 1084	8	FLANGE NUT M6
NUMBER PLATE TO REAR PANEL	615 1017	2	BOLT M6 x 16 mm LONG x 1.0 PITCH
	458 1287	2	M6 SPRING WASHER
	615 1046	2	M6 FLAT WASHER
MISC	180 302	4	BLACK CABLE TIES
	478 1310	1	RSTB PLASTIC RECEIVER COVER
	2125461	1	TOW WARNING LABEL

TOOLS REQUIRED FOR FITMENT: -

METRIC SOCKET AND SPANNER SET , SCREWDRIVER SET , DIA 10.0 mm LONG SERIES DRILL BIT , ELECTRIC DRILL , WIRE CUTTERS AND NEUTRAL CURE BLACK SILICONE SEALANT .

NOTE :- A 30 mm SOCKET OR OPEN ENDED SPANNER WILL BE REQUIRED TO TIGHTEN THE EYE BOLT NUT .

VEHICLE PREPARATION (REQUIRED ON SOME MODELS ONLY) .



1. Removing the existing rear bumper bar from the vehicle (ON ALL MODELS) .
 - Remove the license plate from the factory bumper bar .
 - Dis - connect the license plate lamp loom (located on the chassis rail) .
 - Remove the factory bumper bar and place on a suitable surface or bench using a blanket or cloth to ensure the bumper is not damaged or scratched .
 - Using a small flat bladed screw driver remove the plastic blanking plate as shown from the rear panel .



2. Removing the license plate lamp .

With the bumper bar laying face up on a suitable surface :- remove the two screw that hold the license plate lamp into the bumper bar as shown .

Note :- keep the screws as they are re-used in the next step .



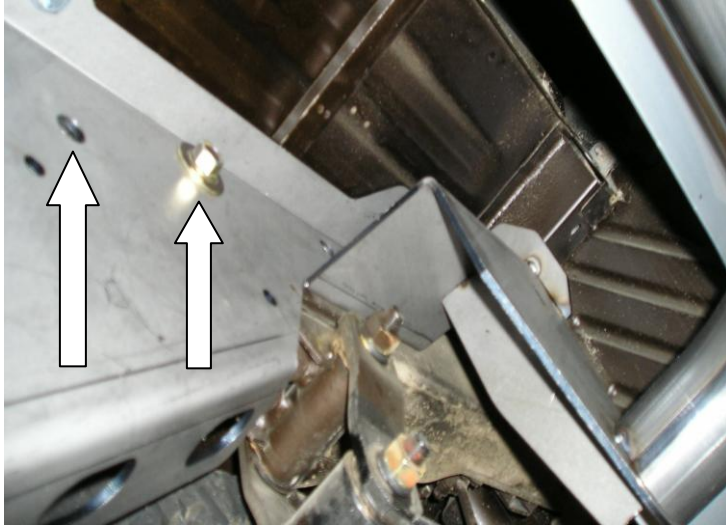
3. License plate lamp to vehicle .

Place the license plate loom through the rectangular hole – from where the blanking plug was removed in step 2 above .

Screw the lamp to the panel as shown .

Note :- Ensure the lens faces the rear panel as shown . Using the cable ties ensure all excess wiring is retained and is well away form any hot or moving parts .

REAR STEP TOW BAR TO VEHICLE (ALL MODELS) .



1. Rear step tow bar to vehicle .

With assistance from another person :- Lift Rear Step Tow Bar into position up above the spring hanger. Align the two holes on the side of chassis bracket with the original 12mm bumper bar captive nut holes as shown .

2. Fasten the rear step tow bar to the vehicle using the two 12mm x 1.5mm plus 12mm hardware supplied in bolt kit two places on each side .

Note :- Leave the bolts finger tighten only at this stage .



3. Drilling the chassis .

Using a 10mm long series drill bit, drill a hole into the lower portion of the chassis rails as shown.

Use the hole in the bracket as a guide to drill the two holes in each chassis rail .



4. Cage nut assembly .

Pre-assemble the M10 caged nuts into the 100 mm plates and fit the assembly into the open end of chassis rail .

Align the plate with the drilled holes and fasten with the M10 bolts supplied .

Note :- Ensure the body of the cage nuts are both facing up-ward when placed inside the chassis .



5. M12 bolt & Arm assy .

Fit the M12 cage nuts into the long cage nut arms .

The arm will be inserted into the open end of chassis rail – ensure the body of the cage nut faces in-board .

The photo shows the arm for the Right hand side .



6. Fitment of the Arm into chassis .

Insert the arm assembly into the open end of chassis rail .

A rotating action of the arm will be required to position the nut arm over any obstructions inside the chassis rail before reaching the rear hole in the rear step tow bar .

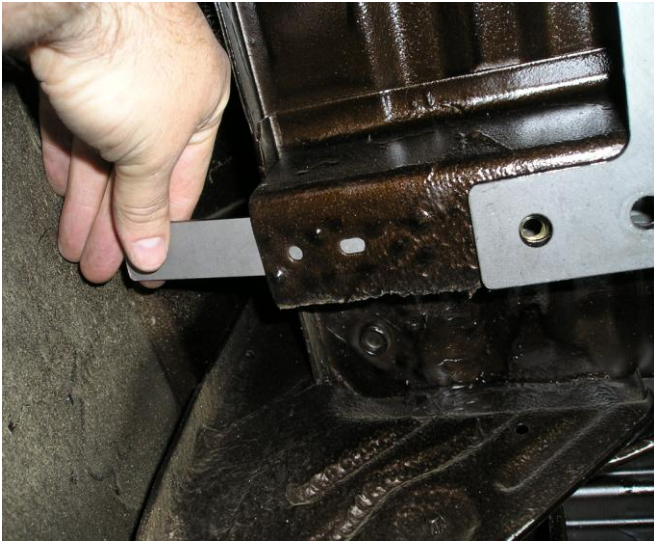
Secure using the 12mm x 40mm long x **1.75mm** pitch bolt plain washer and spring washer supplied in the fitting kit .



7. Cage nut assembly .

Pre-assemble the M10 caged nuts into the 40 mm plates as shown .

Ensure the body of both cage nuts faces up-ward as shown .



8. Fitment of the plate .

Insert the plate assembly into the open end of the cross rail as shown.

Align the cage nut plate with the holes in the rear step tow bar .

Secure using the M10 bolts supplied in the fitting kit .

Now that all bolts are fitted to the rear step tow bar , Ensure that the bar is sitting horizontal with the back panel and fully tighten all bolts .



9. Fitment of the eye bolt .

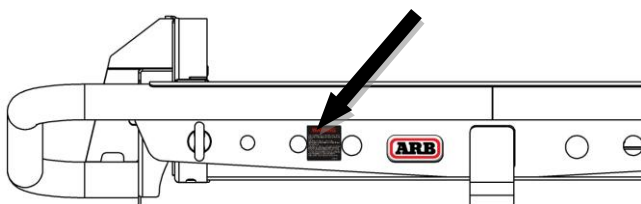
Apply Loctite 262 or equiv. To the eye bolts threads and fit the rear bar at the locations shown using the M20 nuts.



10. Fitment of the checker top plate .

Apply a thin bead of silicon along the rear step tow bar as shown .

Assemble the aluminium checker top plate to the rear step tow bar using the M6 x 25mm dome head bolts , panel washers and M6 flange nuts provided in the fitting kit .



11. Add the tow warning label to the bar as shown.

Note: This label must be not be removed



12. Fitment of the number plate .
SOME MODELS ONLY .

Re – fit the number plate to the vehicle , in its new position on the rear lower panel .

Align the top holes in number plate over the two threaded holes in the back panel and fasten with the M6 bolts and washers supplied in the kit .



13. Fitment of the receiver cover .

Fit the receiver cover to the rear step tow bar as shown (if required). It will need a firm tap to engage the clips of the cover to the hitch collar.

Fit goose neck to Rear Step Tow Bar with the pull pin and R Clip .

Wire up the trailer plug and screw onto the bracket provided on the rear bar . Using the cable ties provided ensure all wiring is retained and is well away form any hot or moving parts .

Ensure all lamps function correctly and all bolts have been tightened .



FORD RANGER RSTB SHOWN .